



# Materialwelt

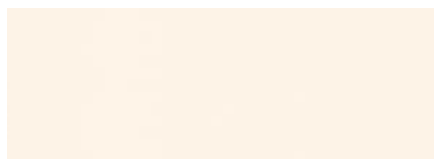
Colours and materials | Couleurs et matériaux



# Dekore

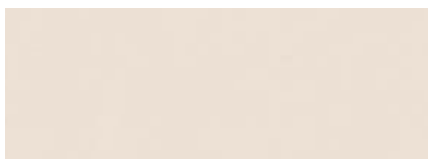
## Decors | Décors

### Unifarbene Dekore | Plain-coloured decors | Décors unis



Jasmin  
Ivory  
Ivoire

U 11523 VV  
141



Sandbeige  
Sand Beige  
Beige Sable

U 16003 VV  
17



NEU: Puder  
NEW: Powder  
NOUVEAU: Poudre

U 16037 SD  
161



NEU: Antilope  
NEW: Antelope  
NOUVEAU: Antilope

U 16012 SD  
162



Salsa  
Salsa  
Salsa

U 16166 SD  
148



Oxidrot  
Oxide Red  
Rouille

U 17271 SD  
150



NEU: Atlantik  
NEW: Atlantic  
NOUVEAU: Océan Atlantique

U 18074 SD  
163



NEU: Fjord  
NEW: Fjord  
NOUVEAU: Fjord

U 18501 SD  
165



Zucchini  
Zucchini  
Zucchini

U 19504 SD  
149



NEU: Avocado  
NEW: Avocado  
NOUVEAU: Avocat

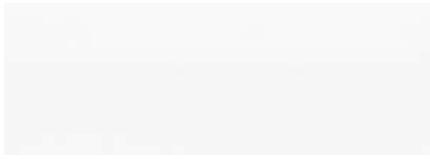
U 19503 SD  
160



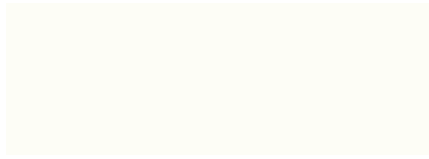
NEU: Congo  
NEW: Congo  
NOUVEAU: Congo

U 16002 SD  
164

## Unifarbene Dekore | Plain-coloured decors | Décors unis



Weiß  
White  
Blanc  
U 11027 VV  
05



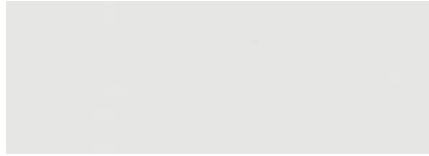
Kristallweiß  
Crystal White  
Blanc Cristal  
U 11026 SD  
147



Office White  
Office White  
Office White  
U 11525 VV  
132



Weißgrau  
White Grey  
Gris Blanc  
U 11500 VV  
91



Lichtgrau  
Light Grey  
Gris Clair  
U 12188 VV  
01



Anthrazit  
Anthracite  
Anthracite  
U 12233 MP  
30

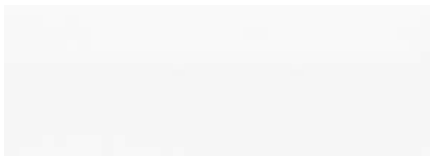


Vulkanschwarz  
Volcanic Black  
Noir Volcan  
U 12000 SD  
143



Weißaluminium  
White Aluminium  
Aluminium Blanc  
F 70006 MP  
39

## Antifingerprint | No Fingerprint | Pas d'empreinte digitale



Weiß  
White  
Blanc  
U 11027 XPSM  
05XTp



Vulkanschwarz  
Volcanic Black  
Noir Volcan  
U 12000 XPSM  
143XTp

# Dekore

## Decors | Décors

### Holzdekore | Wood decors | Décors bois



NEU: Halifax Eiche weiß H1385 ST19  
 NEW: Halifax Oak white  
 NOUVEAU: Halifax Chêne blanc 169\*



NEU: Casella Eiche natur H1176 ST10  
 NEW: Casella Oak natural  
 NOUVEAU: Casella Chêne naturel 168\*



Nordic Teak R 50094 NW  
 Nordic Teak  
 Teck Nordique 146



Altamira Walnut dunkel R 30013 NW  
 Altamira Walnut, dark  
 Noyer Altamira foncé 145



Graphitschwarz U 12007 NW  
 Graphite Black  
 Noir Graphite 151



Royaleiche R 20068 VV  
 Royal Oak  
 Chêne Royal 12



Lindbergeiche hell matt R 20021 NW  
 Lindberg Oak, pale matt  
 Chêne de Lindberg, clair mat 144



Ahorn hell R 27021 VV  
 Light Maple  
 Érable Clair 59



Königsahorn R 27001 VV  
 Royal Maple  
 Érable Royal 06



Buche natur R 24010 MO  
 Natural Beech  
 Hêtre naturel 07



Weißbuche R 24015 VV  
 White Beech  
 Hêtre Blanc 105



Calvados Apfel R 40001 VV  
 Calvados Apple  
 Pomme de Calvados 34



Kirsche edel R 42002 VV  
 Noble Cherry  
 Cerisier Noble 03

\* Auch als Synchronporedekor erhältlich | Also available as synchronised pore decor | Également disponible en décor pore synchronisé.

### Kantenband Dekor | Edge band decors | Bande de chant décor

18 / 19 / 25 mm



Analog Dekor wählbar  
Selectable like decor  
Analogue décor au choix



Multiplex Buche, 3D  
Multiplex Beech, 3D  
Multiplex Hêtre, 3D



Multiplex Silber, 3D  
Multiplex Silver, 3D  
Multiplex Argent, 3D

### Kantenband MDF | Edge band MDF | Bande de chant MDF

16 mm



Analog Dekor wählbar  
Selectable like decor  
Analogue décor au choix



Anthrazit, 3D  
Anthracite, 3D  
Anthracite, 3D

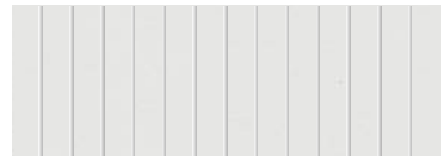
### Rolladen | Shutter | Volet roulant



Weiß, passend zu Weiß 05  
White, suitable for White 05  
Blanc, assorti à Blanc 05



Weißgrau, passend zu Weißgrau 91  
White Grey, suitable for White Grey 91  
Blanc Gris, assorti à Blanc Gris 91



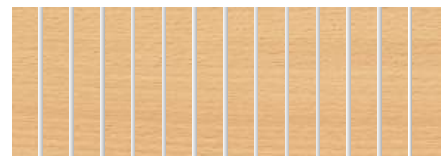
Lichtgrau, passend zu Lichtgrau 01  
Light Grey, suitable for Light Grey 01  
Gris Clair, assorti à Gris Clair 01



Silber  
Silver  
Argent



Anthrazit  
Anthracite  
Anthracite



Buche  
Beech  
Hêtre

# Echtholz

Genuine woods | Bois véritable

## REISS Trailo®



Esche natur, matt lackiert  
Natural Ash, matt varnished  
Frêne nature, peint mat



Eiche gekalkt, matt lackiert  
Limed Oak, matt varnished  
Chêne cérusé, peint mat



Eiche natur, matt lackiert  
Natural Oak, matt varnished  
Chêne nature, peint mat



Eiche schwarz gebeizt, matt lackiert  
Oak stained black, matt varnished  
Chêne noir décapé, peint mat



# Farben

## Colours | Couleurs



NEU: Schwefelgelb  
NEW: Sulphur yellow  
NOUVEAU: Jaune soufre

RAL 1016  
110



Verkehrsgelb  
Traffic Yellow  
Jaune trafic

RAL 1023  
106



Beigerot  
Beige Red  
Rouge Beige

RAL 3012  
102



NEU: Perlgold  
NEW: Pearl gold  
NOUVEAU: Or nacré

RAL 1036  
108



Schilfgrün  
Reed Green  
Vert Jonc

RAL 6013  
103



NEU: Resedagrün  
NEW: Reseda green  
NOUVEAU: Vert réséda

RAL 6011  
111



NEU: Grünblau  
NEW: Green blue  
NOUVEAU: Vert bleu

RAL 5001  
112



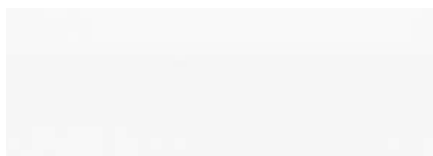
NEU: Pastellblau  
NEW: Pastel blue  
NOUVEAU: Bleu pastel

RAL 5024  
109



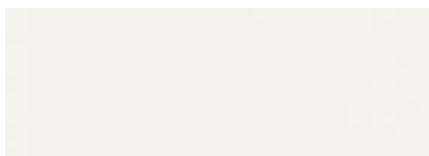
NEU: Perlorange  
NEW: Pearl orange  
NOUVEAU: Orange nacré

RAL 2013  
107



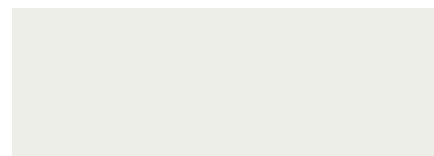
Weiß  
White  
Blanc

REISS 05  
05



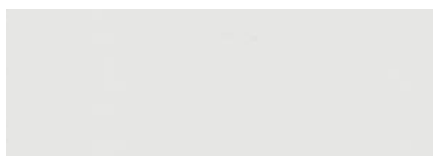
Grauweiß  
Grey White  
Blanc Gris

RAL 9002  
83



Signalweiß  
Signal White  
Blanc de Sécurité

RAL 9003  
104



Lichtgrau  
Light Grey  
Gris Clair

RAL 7035  
01



Graualuminium  
Grey Aluminium  
Aluminium Gris

RAL 9007  
90



Steingrau  
Stone Grey  
Gris Pierre

RAL 7030  
92



Staubgrau  
Dusty Grey  
Gris Poussière

RAL 7037  
02



Umbragrau  
Umbr Grey  
Gris Umbr

RAL 7022  
101



Anthrazit  
Anthracite  
Anthracite

RAL 7016  
61



# Farben

Colours | Couleurs



Schwarz  
Black  
Noir

RAL 9011  
09



Silber  
Silver  
Argent

RAL 9006  
13



Anthrazitmetallic  
Anthracite Metallic  
Anthracite Métallique

REISS 63  
63

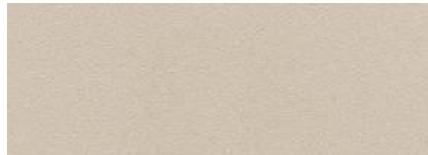


Chrome  
Chrome  
Chrome

## Weitere Farben für Griffe (Schränke und Container) | Other colors for handles (cabinets and containers) | Autres couleurs pour les poignées (armoires et caissons)



Chrom, matt  
Chrom, matt  
Chrome, matt



Nickel, matt  
Nickel, matt  
Nickel, matt

## Formvlies | Formfleece | Voile de fond



Anthrazit hell  
Light Anthracite  
Anthracite clair



Anthrazit dunkel  
Dark Anthracite  
Anthracite foncé

# Polsterstoffe

Upholstery fabrics | Tissus d'ameublement

## REISS Subero® Pads

## Camira Era



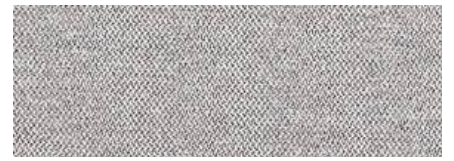
Forward

CSE05



History

CSE21



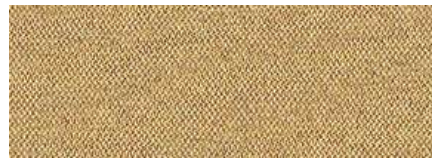
Memo

CSE46



Transition

CSE30



Splitsecond

CSE31



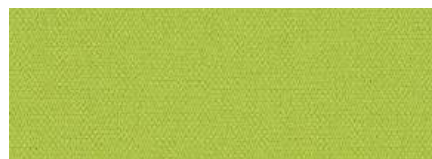
Occasion

CSE32



Endurance

CSE34



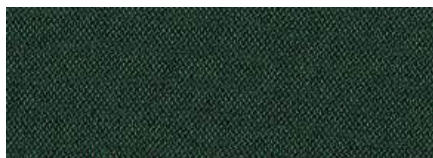
Period

CSE07



Timelapse

CSE16



Signature

CSE35



Everlasting

CSE10



Stage

CSE15



Maturity

CSE40



Range

CSE42



Elapse

CSE44



Late

CSE43



Prime

CSE09



Cycle

CSE06



Experience

CSE29



Span

CSE05

# Polsterstoffe

## Upholstery fabrics | Tissus d'ameublement

### REISS Subero® Pads

### Camira Synergy



Seek LDS27



Bridge LDS26



Mix LDS17



Partner LDS16



Cordial LDS78



Loop LDS18



Level LDS20



Lateral LDS28



Integrate LDS47



Intertwine LDS42



Append LDS49



Kindness LDS51



Support LDS55



Engage LDS57



Process LDS88



Warmth LDS67



Compose LDS72



Global LDS86



Apt LDS80



Contribution LDS75



# Polsterstoffe

Upholstery fabrics | Tissus d'ameublement

## REISS Subero® Pads



Edgware

MLF28



Temple

MLF16



Whitechapel

MLF66



Redbridge

MLF61



Pinner

MLF60



Upminster

MLF20



Tooting

MLF17



Woodford

MLF67



Tufnell

MLF18



Kentish

MLF56



Hornchurch

MLF55



Pimlico

MLF34



Holborn

MLF05



Victoria

MLF19



Embankment

MLF50



Chigwell

MLF48



Parsons

MLF14



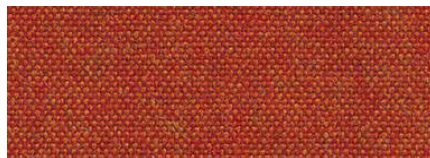
Aldgate

MLF01



Barking

MLF45



Leyton

MLF13

## Camira Main Line Flax



# Polsterstoffe

## Upholstery fabrics | Tissus d'ameublement

### REISS Subero® Pads

### Camira Penta



Shade PEN13



Tincture PEN14



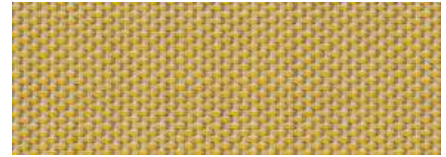
Hint PEN16



Optic PEN14



Light PEN20



Hue PEN21



Glow PEN19



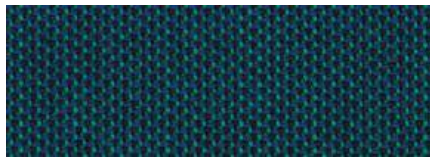
Bright PEN08



Goethe PEN11



Newton PEN10



Spectral PEN09



Tempera PEN04



Prism PEN03



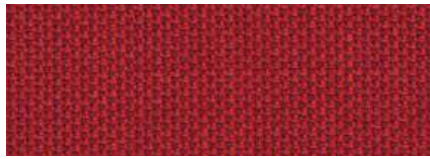
Saturation PEN06



Iris PEN25



Visual PEN27



Chroma PEN32



Radiance PEN28



Paint PEN30



Dominant PEN33



Camira Era



Camira Penta



Camira Synergy/Main  
Line Flax

# Garnfarben für Polster

Yarn colours for upholstery | Couleurs de fil pour rembourrage

## REISS Subero® Pads



Neongelb  
Neon Yellow  
Jaune Néon

2719



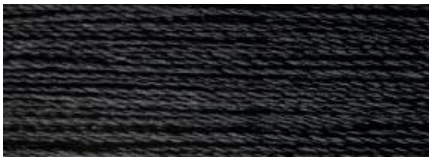
Neonrosa  
Neon Pink  
Rose Néon

2906



Neongrün  
Neon Green  
Vert Néon

2706



Schwarz  
Black  
Noir

5080



Mittelgrau  
Medium Grey  
Gris moyen

5123



Beige  
Beige  
Beige

5089



Gelb  
Yellow  
Jaune

5101



Grün  
Green  
Vert

5110



Blau  
Blue  
Bleu

5032



Marineblau  
Navy Blue  
Bleu Marine

5120



Rot  
Red  
Rouge

5008



Orange  
Orange  
Orange

5073







# Akustikstoffe

Acoustic fabrics | Tissus acoustiques

Preisgruppe 1 | Price group 1 | Groupe de prix 1

Camira Lucia



Havana

LHA



Sombrero

LSB



Paseo

LPA



Blizzard

LBD



Tequila

LTQ



Buru

LBU



Slip

LSL



Rum

LRU



Adobo

LAD



Oyster

LOY



Aruba

LAU



Sandstorm

LSA



Solano

LSO



Apple

LAP



Madura

LMD



Campeche

LCA



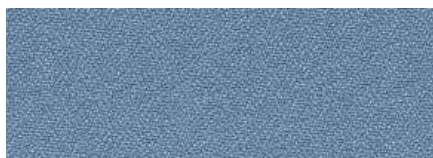
Montserrat

LMO



Windjammer

LWJ



Steel

LST



Marianna

LMI



Bluebell

LBL



Martinique

LMA



Scuba

LSC



Ocean

LOC



Costa

LCO



Tarot

LTR



Bridgetown

LBR



# Akustikstoffe

## Acoustic fabrics | Tissus acoustiques

### Preisgruppe 1 | Price group 1 | Groupe de prix 1

### Camira Lucia



Calypso

LCL



Lobster

LLO



Belize

LBZ



Tortuga

LTT

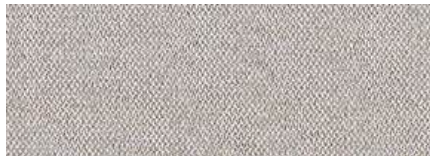
### Preisgruppe 2 | Price group 2 | Groupe de prix 2

### Camira Era170



Forward

EFR



Quota

EQU



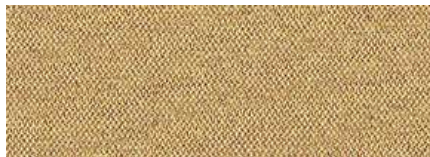
Futurist

EFU



Transition

ETR



Splitsecond

ESP



Analogue

EAN



Notation

ENO



Aeon

EAE



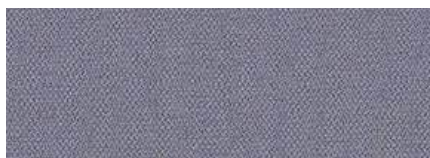
Allowance

EAL



Range

ERA



Forecast

EFO



Occurrence

EOU



Calendar

ECA



# Akustikstoffe

Acoustic fabrics | Tissus acoustiques

Preisgruppe 2 | Price group 2 | Groupe de prix 2

Camira Quest



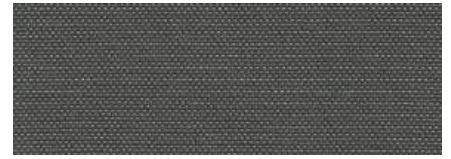
Depth

QUD



Mussel

QUM



Quartz

QUQ



Shell

QUS



Pepple

QUJ



Fossil

QUF



Barnacle

QUB



Salt

QUX



Beach Comber

QUC



Sandstone

QUO



Driftwood

QUI



Sea Grass

QUG



Abalone

QUV



Algae

QUA



Kelp

QUK



Sea Foam

QUE



Urchin

QUU



Ripple

QUR



Tide

QUT



Wave

QUN



Rock Pool

QUP



Whelk

QUW



Limpet

QUL



Cockle

QUV



Crab

QUZ



Shrimp

QUH



Clay

QUY



# Akustikstoffe

## Acoustic fabrics | Tissus acoustiques

Preisgruppe 3 | Price group 3 | Groupe de prix 3

Camira Lucia CS (B1, DIN 4102)



Havana

BLHA



Revive

BLRV



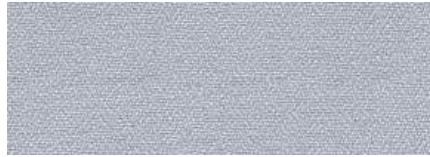
Blizzard

BLBD



Slip

BLSL



Rum

BLRU



Adobo

BLAD



Varadero

BLVA



Aruba

BLAU



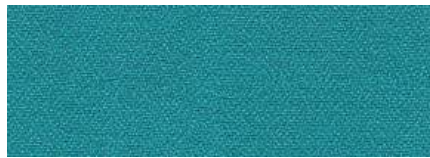
Kota

BLKO



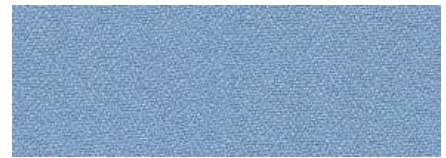
Tenom

BLTE



Depok

BLDE



Medan

BLME



Roques

BLRO



Makili

BLMK



Costa

BLCO



Negril

BLNE



Panama

BLPN

Feuersicherung: Alle Stoffe erfüllen BS 476 Part 7 Class 1.

Die Stoffe Lucia CS in der Preisgruppe 3 erfüllen zusätzlich die Klassifizierung B1 nach DIN 4102.

Fire safety: All fabrics comply with BS 476 Part 7 Class 1.

Lucia CS fabrics in price group 3 also comply with classification B1 in accordance with DIN 4102.

Sécurité incendie : tous les tissus sont conformes à la norme BS 476 Part 7 Class 1.

Les tissus Lucia CS du groupe de prix 3 répondent en outre à la classification B1 selon la norme DIN 4102.



Camira Era170/Lucia BS



Camira Lucia/Quest\*

\*Ocean Waste Clean Impact Textiles®

Hergestellt mit Plastikabfall aus dem Meer der SEAQUAL™-Initiative

Made with plastic waste from the sea from the SEAQUAL™ initiative

Fabriqué avec des déchets plastiques marins de l'initiative SEAQUAL™

Dekor- und Farbauswahl entsprechend der einzelnen REISS Büromöbelprogramme. Geringfügige Farbabweichungen sind drucktechnisch bedingt.

Décor und colour selection according to the individual REISS office furniture programs. Slight colour deviations are due to the printing technology.

Choix de décors et de couleurs correspondant aux différentes gammes de meubles de bureau REISS. Les légères différences de couleur sont dues à la technique d'impression.



REISS ist zertifiziert nach dem Qualitätsmanagementsystem (DIN EN ISO 9001), dem Umweltmanagementsystem (DIN EN ISO 14001), dem Produktketten-Zertifikat PEFC-CoC sowie EMAS III.

Technische Änderungen vorbehalten.

REISS is certified in accordance with the quality management system (DIN EN ISO 9001), the environmental management system (DIN EN ISO 14001), the product chain certificate PEFC-CoC and EMAS III.

Subject to technical changes.

REISS Büromöbel GmbH est certifiée conformément au système de gestion de la qualité (DIN EN ISO 9001), au système de gestion de l'environnement (DIN EN ISO 14001), au certificat de chaîne de production PEFC-CoC et à EMAS III. Sous réserve de modifications techniques.

**Hersteller | Manufacturer | Fabricants**

REISS Büromöbel GmbH  
D-04924 Bad Liebenwerda

+49 35341 48-360  
info@reiss-bueromoebel.de

[www.reiss-bueromoebel.de](http://www.reiss-bueromoebel.de)

Mitglied im Industrieverband Büro- und Arbeitswelt e.V. (IBA)

Member of the Industrial Association of Offices and Work Environment (IBA)